

Chimeric HLA-A*02:01 ($\alpha 3$) & B2M&NY-ESO-1 (SLLMWITQC) Tetramer Protein



Cat. No. MHC-HM424T

Description

Source	Recombinant Chimeric HLA-A*02:01($\alpha 3$)&B2M&NY-ESO-1 (SLLMWITQC) Tetramer Protein is expressed from HEK293 with His tag and Avi tag at the C-Terminus, tetramer is assembled by biotinylated monomer and streptavidin.
Accession	A0A140T913(Human HLA-A*02:01 $\alpha 1$ & $\alpha 2$)&P01895(Mouse H-2Ld $\alpha 3$)&P61769(B2M)&SLLMWITQC
Molecular Weight	The protein has a predicted MW of 258 kDa. Due to glycosylation, the protein migrates to 260-265 kDa under Non reducing (N) condition based on Bis-Tris PAGE result.
Endotoxin	Less than 1EU per μ g by the LAL method.
Purity	> 95% as determined by Bis-Tris PAGE > 95% as determined by HPLC

Formulation and Storage

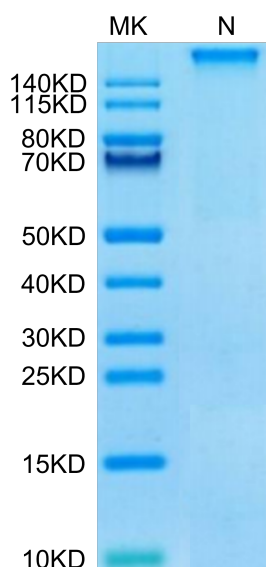
Formulation	Supplied as 0.22 μ m filtered solution in PBS (pH 7.4).
Storage	Valid for 12 months from date of receipt when stored at -80°C. Recommend to aliquot the protein into smaller quantities for optimal storage. Please minimize freeze-thaw cycles.

Background

NY-ESO-1 or New York esophageal squamous cell carcinoma 1 is a well-known cancer-testis antigen (CTAs) with re-expression in numerous cancer types. Its ability to elicit spontaneous humoral and cellular immune responses, together with its restricted expression pattern, have rendered it a good candidate target for cancer immunotherapy.

Assay Data

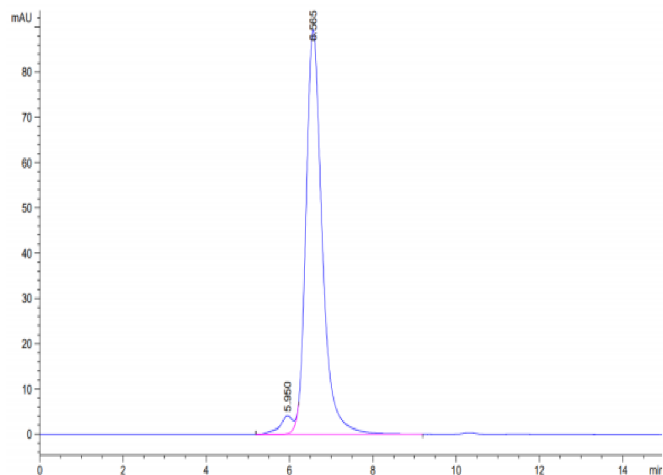
Bis-Tris PAGE



Chimeric HLA-A*02:01 ($\alpha 3$) & B2M&NY-ESO-1 (SLLMWITQC) Tetramer on Bis-Tris PAGE under Non reducing (N) condition. The purity is greater than 95%.

SEC-HPLC

Assay Data

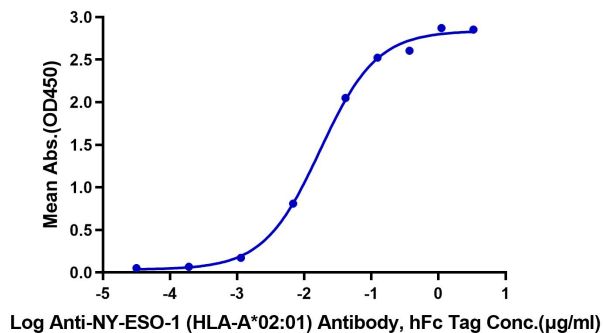


The purity of Chimeric HLA-A*02:01 ($\alpha 3$) & B2M&NY-ESO-1 (SLLMWITQC) Tetramer is greater than 95% as determined by SEC-HPLC.

ELISA Data

Human&Mouse Chimeric NY-ESO-1 (HLA-A*02:01) Tetramer, His Tag ELISA

0.2 μ g Human&Mouse Chimeric NY-ESO-1 (HLA-A*02:01) Tetramer, His Tag Per Well



Immobilized Chimeric HLA-A*02:01 ($\alpha 3$) & B2M&NY-ESO-1 (SLLMWITQC) Tetramer, His Tag at 2 μ g/ml (100 μ l/Well) on the plate. Dose response curve for Anti-HLA-A*02:01&B2M&NY-ESO-1 (SLLMWITQC) Antibody, hFc Tag with the EC50 of 17.3ng/ml determined by ELISA.